

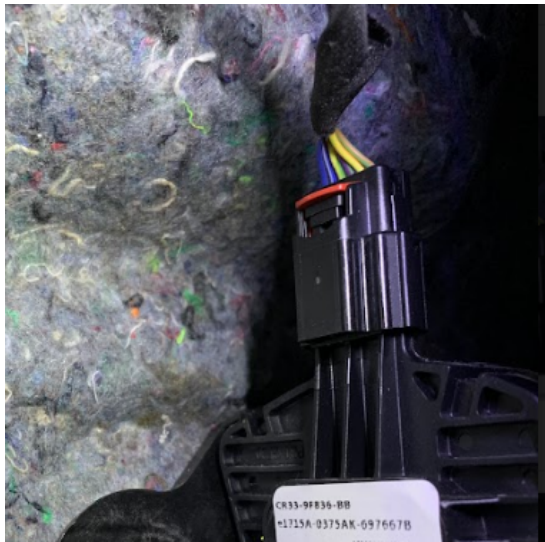


This manual will outline the installation and configuration options for the Launch Limiter. The Launch Limiter can be used in most Ford and Dodge drive by wire vehicles. Ensure that the connector attached to the pedal in your vehicle matches the plug and play harness for this installation.

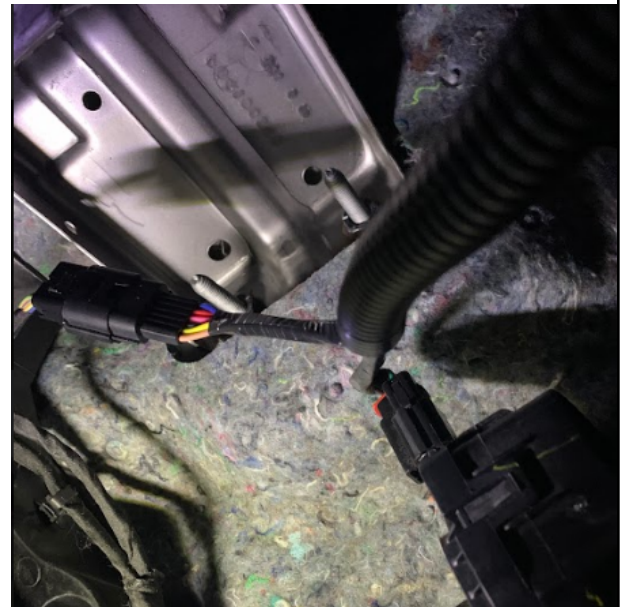
The Launch Limiter can have multiple trigger sources to enable the device. Below you will find instructions for several different installation options.

Perform the installation in the following order:

1. Turn the ignition off, **and disconnect the battery**. Locate the foot pedal under the drivers side dash and disconnect it. If it contains a red clip, slide it upward prior to pressing on the release tab



2. Locate the Plug and Play harness. Insert the harness between the vehicle connector and the pedal connector.

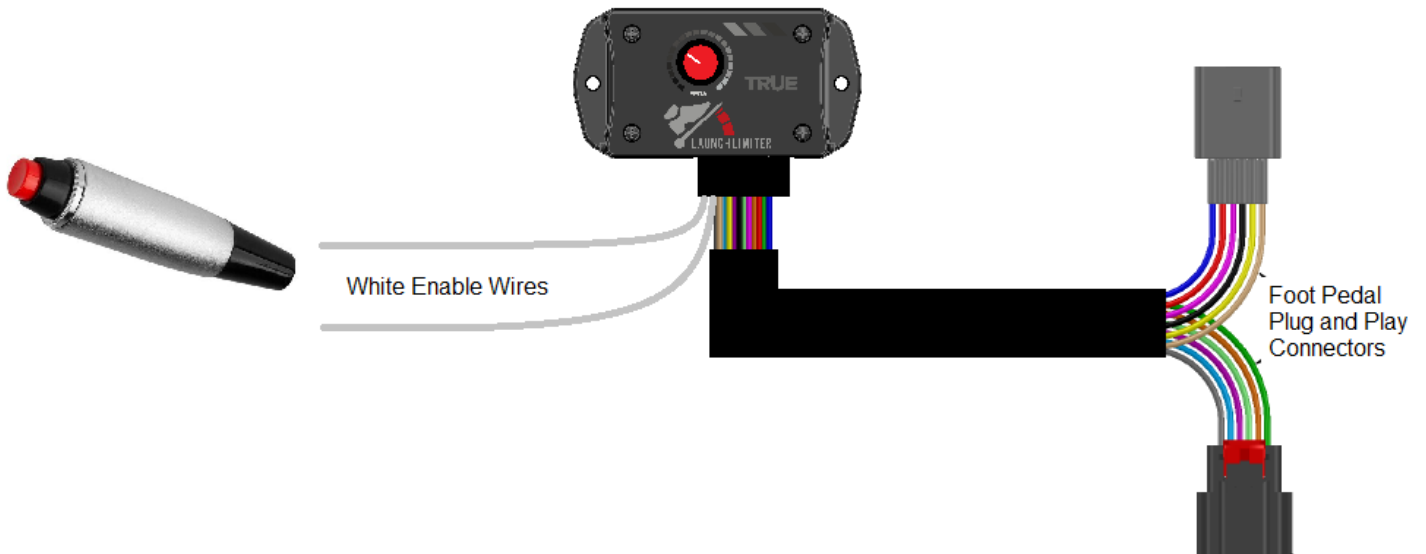


3. Route the wire harness to the desired location where you would like to position the launch limiter. Once a location is identified, plug the harness into the Launch Limiter:



4. Connect the enable switch to the white wires. Below are several switch options that can be used for triggering the Launch Limiter.

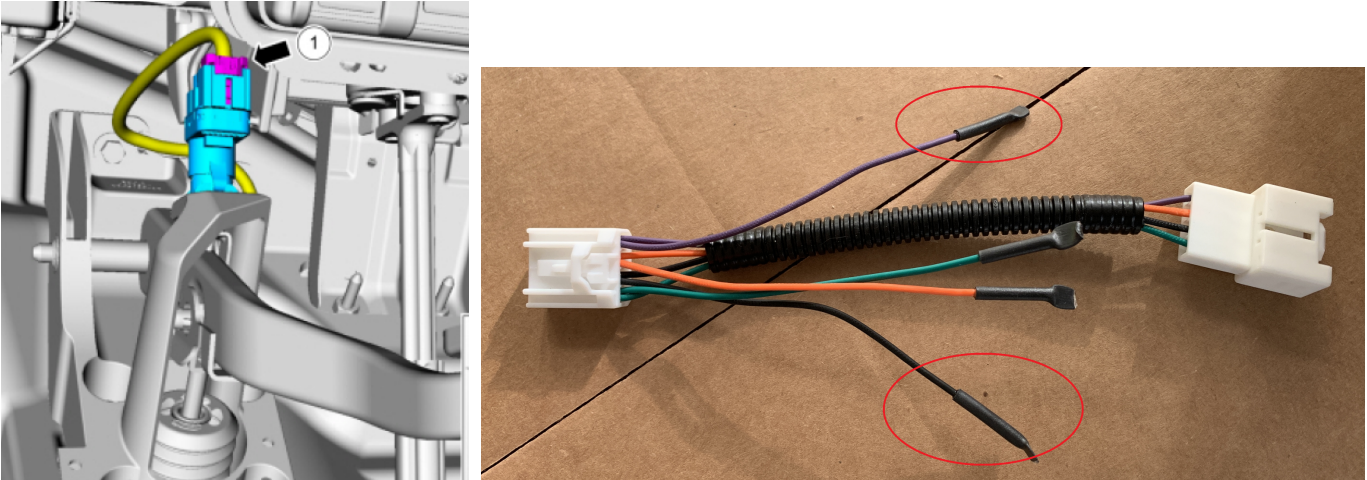
STANDARD PUSHBUTTON SWITCH ENABLE CONFIGURATION



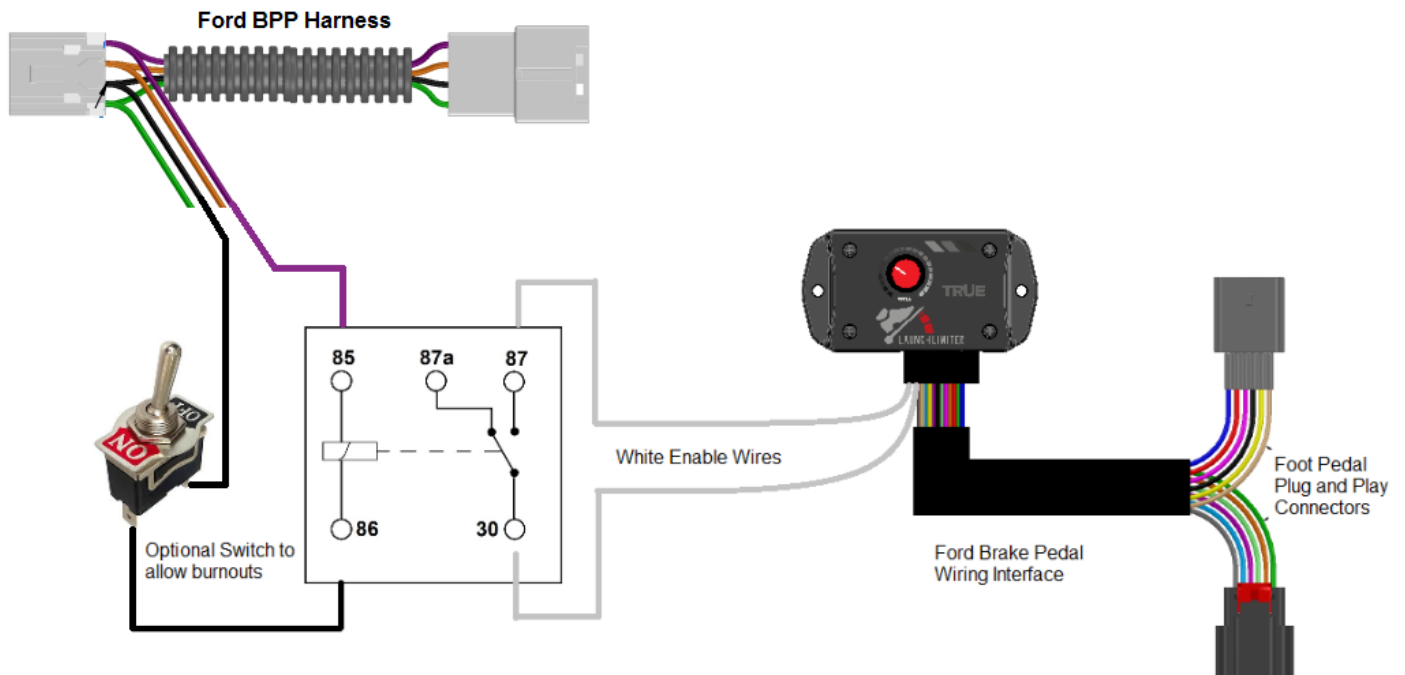
Using the supplied switch or an alternative option, connect the two white flying lead wires to the normally open switch.

FORD BRAKE PEDAL ENABLE CONFIGURATION

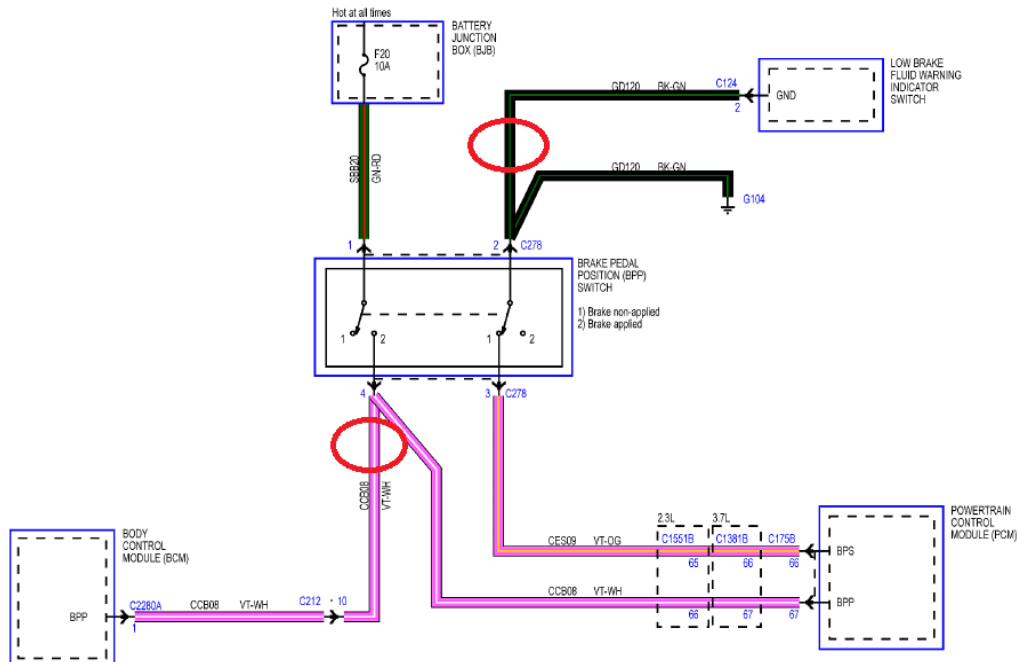
Locate the Ford Brake Pedal Position (BPP) connector located above the Footbrake. Disconnect the connector and insert the supplied breakout harness in-between this connection.



Attach the Violet wire from the BPP Harness to Pin 85 of the relay and the BPP Black wire to Pin 86. To disable the Launch Limiter from activation, an in-line switch can be inserted into the circuit as shown below. You would use the switch if doing a burn-out and did not want the Launch Limiter to work during the burnout.



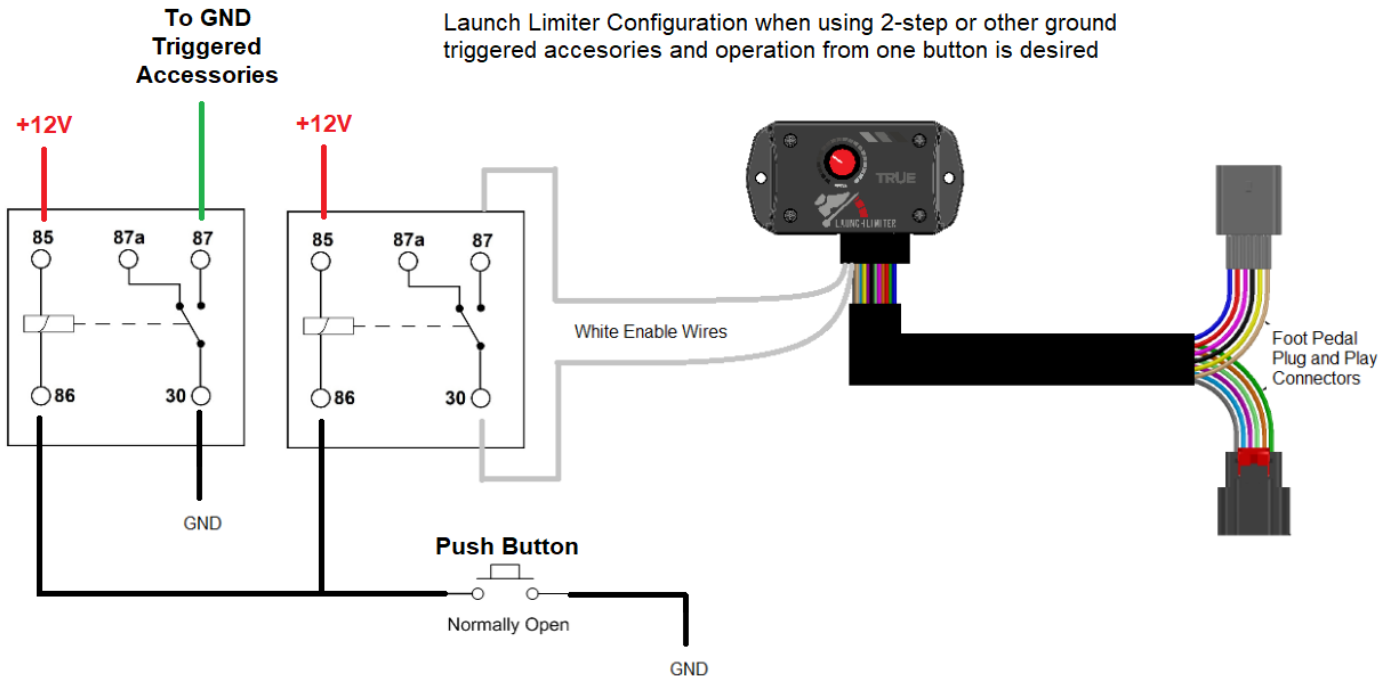
Connect one white wire from the Launch Limiter Harness to Pin 30 of the Relay and connect the other white wire to Pin 87.



Per the above schematic, the Brake Pedal on Ford vehicles can be used to control a relay for enabling the Launch Limiter. In the event that a Ford vehicle does not have a ground connection in the brake pedal harness per the above schematic, pin 86 of the relay can be connected to a chassis ground instead of the black wire in the Brake Pedal Position harness.

GROUND TRIGGER ENABLE CONFIGURATION

A single button can be used for activating ground triggered accessories as well as the Launch Limiter per the below wiring diagram



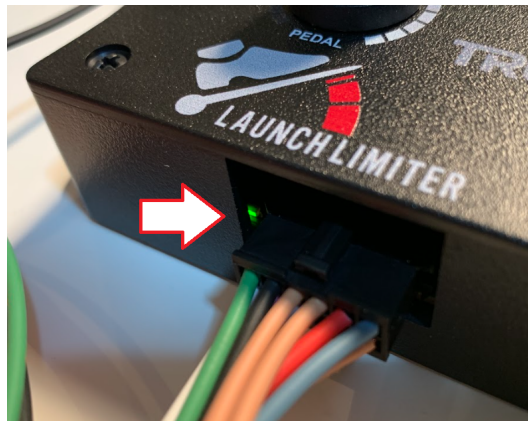
Launch Limiter Operator's Manual

The Launch Limiter can be used in a variety of ways to alter the pedal position that is sent to the PCM and will only alter the signal when: 1) The Launch Limiter is triggered (white wires connected with switch). 2) The “real” pedal position exceeds the pedal position setting selected.

The benefit of the Launch Limiter is that you have repeatable and precise control of your pedal position when lining up at the staging beams. The Launch Limiter pedal position setting is dependent upon the horsepower level that your brakes can hold, while allowing your suspension to be loaded up for launch.

To enable and use the Launch Limiter follow the steps below:

1. With the pedal position at 0%, engage the switch that completes the circuit for the white wires. This switch connection can be made with the supplied button or a relay circuit connection.
2. Rotate the Pedal Position Knob on the Launch Limiter to the lowest setting (counter-clockwise).
3. Increase the pedal position to WOT or until the green led from within the box illuminates. This indicates that the Launch Limiter is limiting the pedal position signal sent to the PCM.



4. Increase the Pedal Position knob to the desired setting while having the foot pedal at WOT.
5. Release the enable button to allow the “real” pedal position to be sent to the PCM at the desired time. Depending on the installation, this could be from the release of the enable switch or a release of the footbrake

When enabled, the Launch Limiter is designed to act as a “red line” for your foot pedal signal. The Launch Limiter can be used for staging and preloading of suspension for drag racing. It can also be utilized for pedal control during roll racing, or also provide a means to enable a valet mode by enabling the Launch Limiter when desired. Valet mode can only be accomplished when the circuit between the white wires is connected.